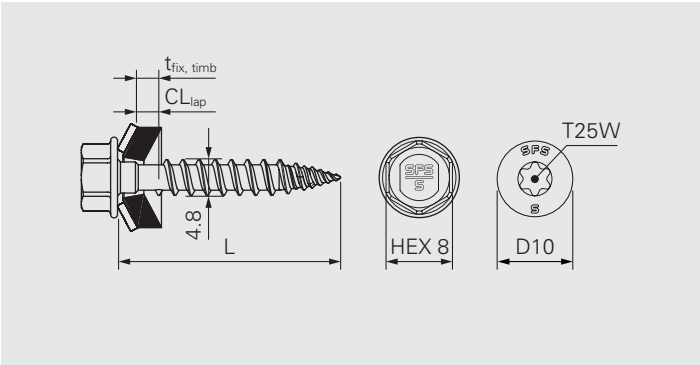
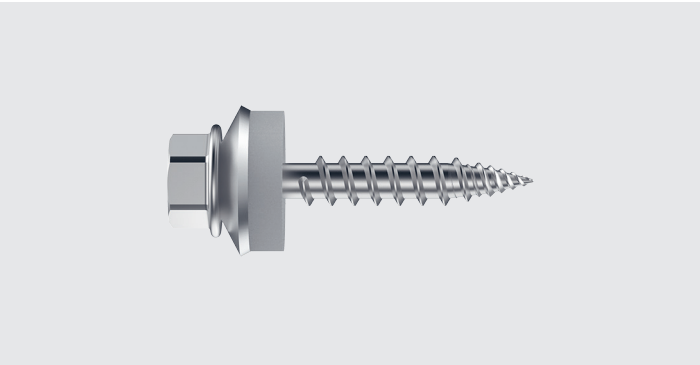


CXLW-4.8-A2/A4



Description

Self-drilling fastener made of stainless steel with FastTip®, free-spin zone and sealing washer

Application

- Fastening of overlaps of profile sheets
- Fastening of overlaps of sandwich panels
- Fastening of flashings onto profile sheets
- Fastening of flashings onto sandwich panels
- Fastening of profile sheets onto timber

Component 1 (t ₁)		Component 2 (t ₂)	
Steel	0.4–1.0	Steel	0.4–1.0
Steel	2×0.4–0.75	Steel	2×0.4–0.75
Aluminium	0.5–1.5	Aluminium	0.5–1.5
		Timber	l _p ≥ 23

Condition: Total thickness within CL_{lap}

Fastener material

Austenitic stainless steel A2/A4, hardened tip
Sealing washer: Aluminium, EPDM-seal

Features and Benefits

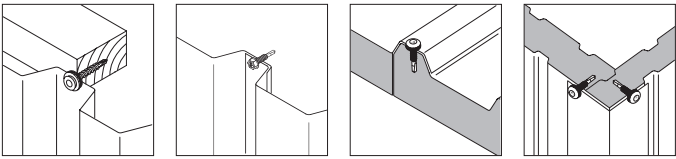
- Fast and chip-free installation without necessary post-cleaning
- No torque control required thanks to the free-spin zone
- Comfortable installation without overwinding risk
- High security against unwinding by the cut-off thread-end
- Special AV-shaped sealing washer for high clamping range
- High quality EPDM-seal with long durability

Approvals



All measures in mm

All information is non-binding and without guarantee. Before using the products, all specifications and calculations must be checked by a suitably qualified person and local regulations must be observed. This document is subject to revision. We reserve the right to make technical changes.



Fastener in A2

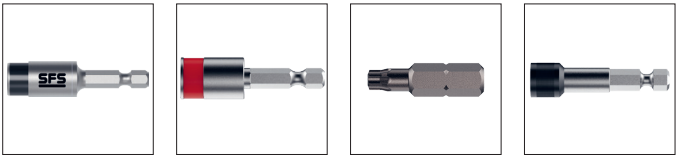
Product code	PU	L	CL _{lap}	t _{fix, timb}	A11	AV14	AV16
CXLW-AV14-4,8×28-A2	100	28	0.8–3.5	0–2	–	1747623	1749183
CXLW-AV14-4,8×28-A2	500					1659057	1749230
CXLW-D10-A11-4,8×28-A2	100		0.8–2.5		1748193	–	–
CXLW-D10-A11-4,8×28-A2	500				1747805		

Please refer to the “Definition of clamping range and fixing thickness” in the technical introduction for definitions and diagrams related to CL_{lap} and t_{fix, timb}.

Fastener in A4

Product code	PU	L	CL _{lap}	t _{fix, timb}	A11	AV14	AV16
CXLW-AV14-4,8×28-A4	100	28	0.8–3.5	0–2	–	1747812	1748204
CXLW-AV14-4,8×28-A4	500					1747773	1748209
CXLW-D10-A11-4,8×28-A4	100		0.8–2.5		1748220	–	–
CXLW-D10-A11-4,8×28-A4	500				1748223		

Please refer to the “Definition of clamping range and fixing thickness” in the technical introduction for definitions and diagrams related to CL_{lap} and t_{fix, timb}.



Accessories

Product description	PU	Insert drive	Recess	L	
SOK-IT-¼"-57-6Nm	1	HEX¼"	HEX8	57	1667323
Socket E308-¼"-50				50	1646160
Bit T25W-25-HEX¼"			T25W	25	7662
Bit holder ZA¼"-58			HEX¼"	58	1162306

All measures in mm